

# *J.S. and C.P.E. Bach*

*Webber Music Public Domain Library*

*J.S. Bach Flute Partita*

*C.P.E. Bach Sonata in A minor*

*for solo flute*



# *Flute Music*

*J. S. Bach*

*Partita in A minor*

*C. P. E. Bach*

*Sonata in A minor*

**webber music 197101**  
[www.webbermusic.com](http://www.webbermusic.com)

*webber music public domain edition*

# PARTITA

Allemande

for solo flute

J.S. Bach BWV 1013

3

5

7

9

11

13

15

17

19 1. 2.

21

23

25

27

29

31

33

35

37

39

41

43

45

47

4

# Corrente

Musical staff 4, starting at measure 4. The key signature has two sharps (F# and C#). The melody consists of eighth and sixteenth notes with various accidentals.

5

Musical staff 5, starting at measure 5. The melody continues with eighth and sixteenth notes.

8

Musical staff 8, starting at measure 8. The melody continues with eighth and sixteenth notes.

11

Musical staff 11, starting at measure 11. The melody continues with eighth and sixteenth notes.

14

Musical staff 14, starting at measure 14. The melody continues with eighth and sixteenth notes.

17

Musical staff 17, starting at measure 17. The melody continues with eighth and sixteenth notes.

20

Musical staff 20, starting at measure 20. The melody continues with eighth and sixteenth notes.

23

Musical staff 23, starting at measure 23. The melody continues with eighth and sixteenth notes.

27

Musical staff 27, starting at measure 27. The melody continues with eighth and sixteenth notes.

30

Musical staff 30, starting at measure 30. The melody continues with eighth and sixteenth notes. A flat (b) is placed above the staff at measure 31.

33

36

39

42

45

48

51

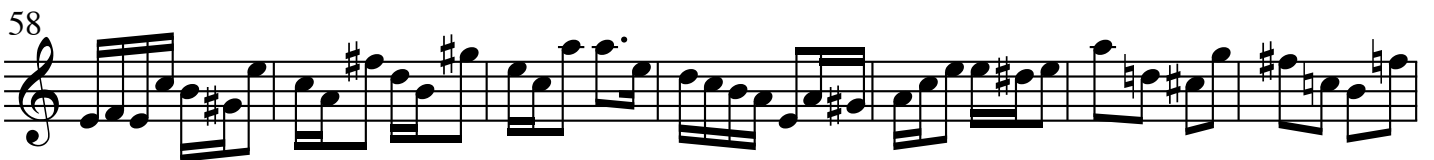
54

57

60



Bouree Anglais



# SONATA

*for solo flute*

C.P.E. Bach (1714-1788)

Poco Adagio

7

13

19

25

31

37

43



## Allegro

6

12

18

24

29

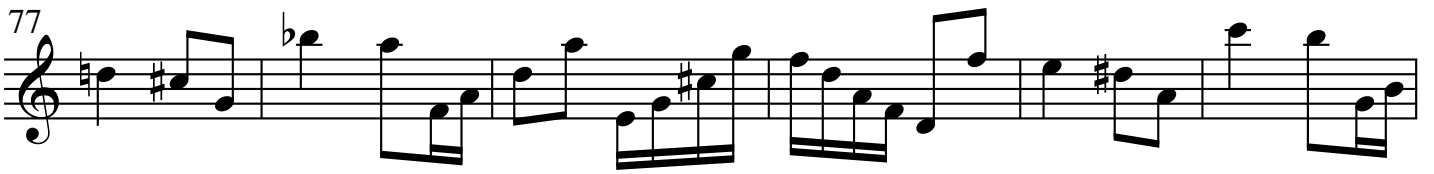
35

41

47

52

57



## Allegro

7

14

20

27

34

41

48

53

62

68

Musical score for guitar, page 13, measures 77-144. The score is written in treble clef and includes various musical notations such as notes, rests, accidentals, and fingerings.

Measures 77-83: Melodic line with a 7th fret barre and a flat (b) above the staff.

Measures 84-90: Melodic line with a sharp (#) above the staff.

Measures 91-97: Melodic line with a 7th fret barre.

Measures 98-104: Melodic line with a 7th fret barre.

Measures 105-111: Melodic line with a sharp (#) above the staff.

Measures 112-117: Melodic line with a sharp (#) above the staff.

Measures 118-123: Melodic line with a flat (b) above the staff.

Measures 124-130: Melodic line with a sharp (#) above the staff and a triplet (3) below the staff.

Measures 131-137: Melodic line with a sharp (#) above the staff.

Measures 138-143: Melodic line with a sharp (#) above the staff.

Measures 144: Melodic line with a sharp (#) above the staff and a triplet (3) below the staff.

			from the complete catalog
197902	John Webber	<b>Baum Quartet</b>	<i>for flute, viola, cello and bassoon</i>
198106	John Webber	<b>Fall Of The House Of Usher</b>	<i>for 8 players and narrator</i>
200521	John Webber	<b>Five Folk Song Fantasies</b>	<i>for flute, violin, cello</i>
199601	John Webber	<b>Five Ostinatos</b>	<i>for solo fl, cl, pno, orchestra</i>
199103	John Webber	<b>Flute Concerto</b>	<i>for flute, orchestra</i>
200005	John Webber	<b>Flute Partita</b>	<i>for solo flute</i>
198705	John Webber	<b>Flute Sonata</b>	<i>for flute, piano</i>
197703	John Webber	<b>Fragments</b>	<i>for flute, piano</i>
199502	John Webber	<b>Kaleidiphone</b>	<i>for flute, violin, cello</i>
200513	John Webber	<b>Ludicrous Canonicus</b>	<i>for wind or string quartet</i>
199911	John Webber	<b>Microcosm</b>	<i>for wind quintet</i>
197801	John Webber	<b>Prolobium</b>	<i>for flute, piano</i>
198906	John Webber	<b>Quartet</b>	<i>for flute, violin, viola, cello</i>
199105	John Webber	<b>Running The Friendly Racecourse (Again)</b>	<i>for flute, guitar</i>
197102	JS Bach	<b>Six Flute Sonatas</b>	<i>for solo flute</i>
197103	JS Bach	<b>Sonata in G Minor</b>	<i>for solo flute</i>
199811	John Webber	<b>The Holy Genesimus Archimimus</b>	<i>flute, clarinet, violin, cello &amp; piano</i>
200527	John Webber	<b>Three Movements</b>	<i>for flute, violin, cello</i>
199606	John Webber	<b>Tolliday Quintet</b>	<i>for flute, string quartet</i>
200607	John Webber	<b>Trigrams</b>	<i>for flute ensemble</i>
198808	John Webber	<b>Trio</b>	<i>for flute, bassoon, piano</i>
200802	John Webber	<b>Trio Book</b>	<i>for flute, guitar, piano</i>
200613	John Webber	<b>Twelve Miniatures</b>	<i>for flute, piano, strings</i>

*see the complete catalog at <http://www.webbermusic.com>*