

Cello  
**The Kiss**

*for Baritone and String Quartet*

Abraham Newsom

**Prelude:** Andante, ♩ = 160

12 *mf*

24

36

49

63 *p* **I: Mary Magdalene** *mf*

77

87

97

106 **7** *a tempo*

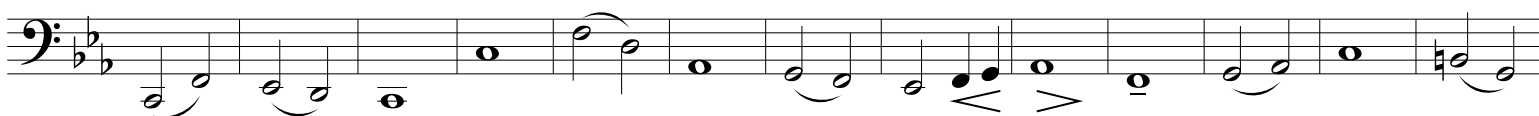
121 *mf* **2**

133 [123-124]

144 *f* **2**

*mf* [148-149] [154-155]

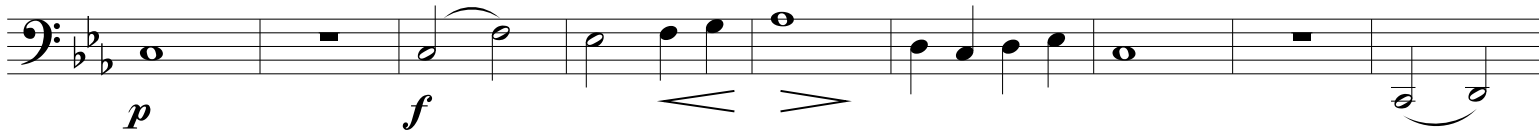
156



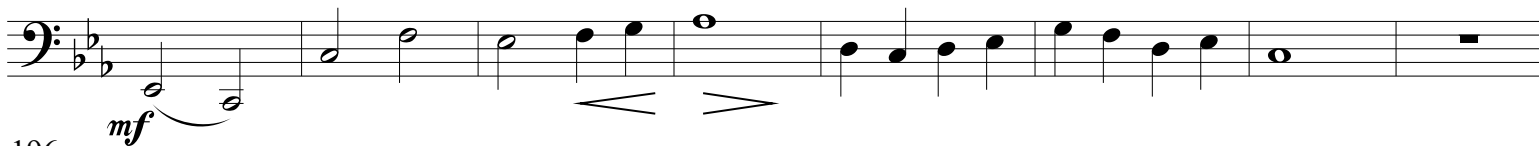
169



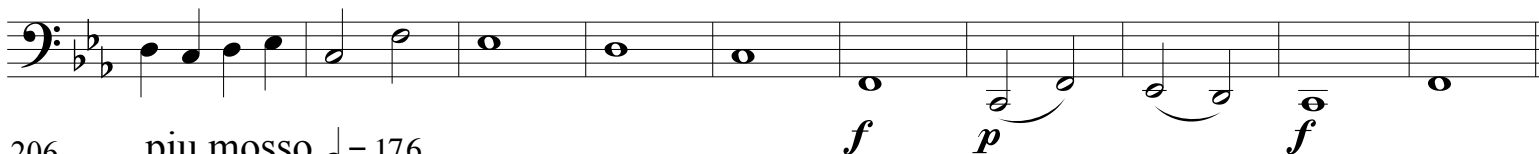
179



188

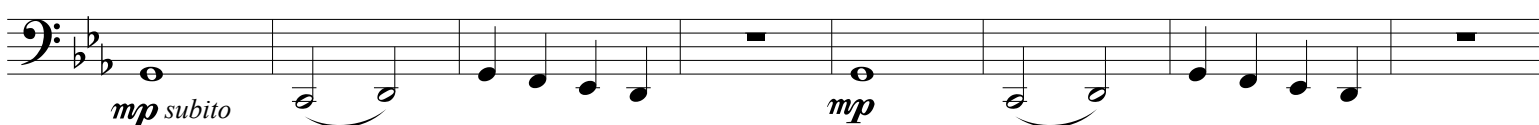


196

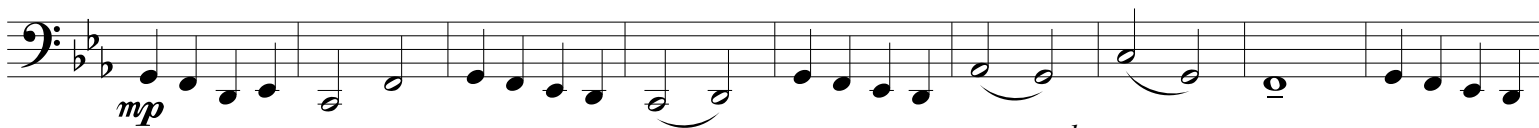


206

piu mosso ♩ = 176



214



223

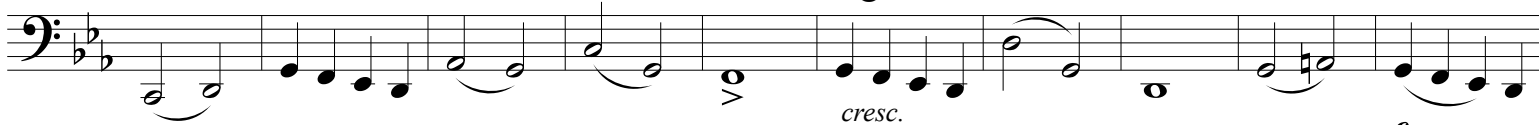
2

2

accel, poco a poco  
becoming agitated

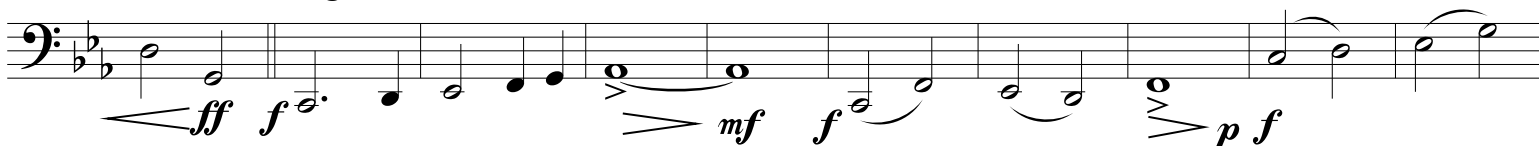
233

Agitato, ♩ = 208 accel.

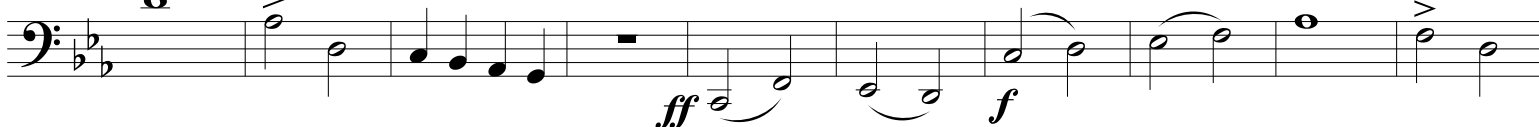


243

Agitato, ♩ = 160



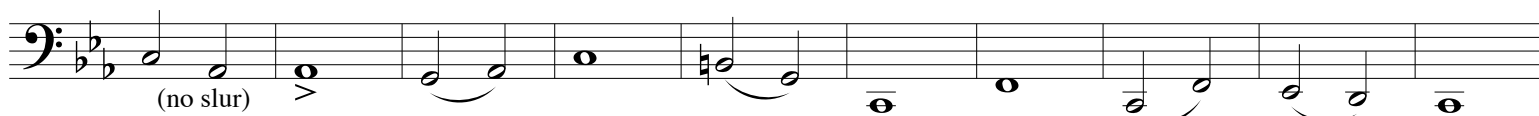
253



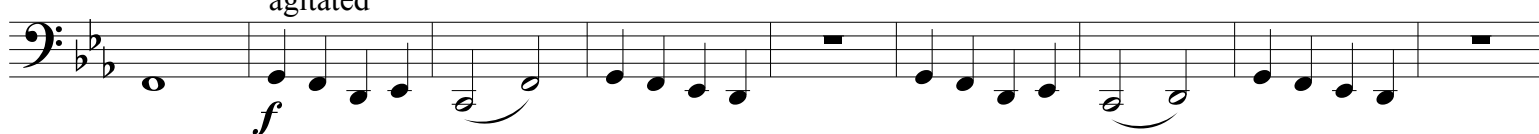
263



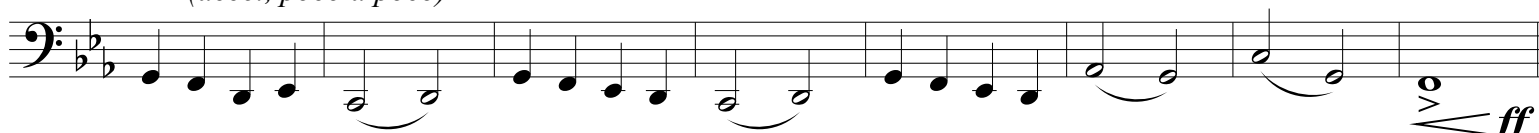
273



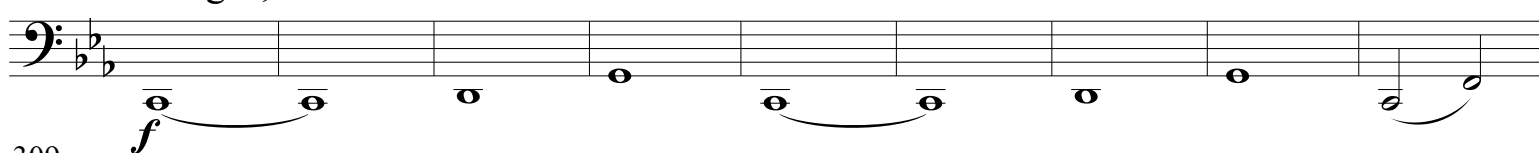
283



292



300

Allegro,  $\text{♩} = 192$ 

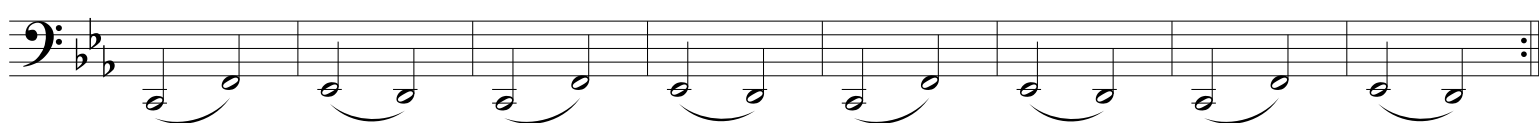
309



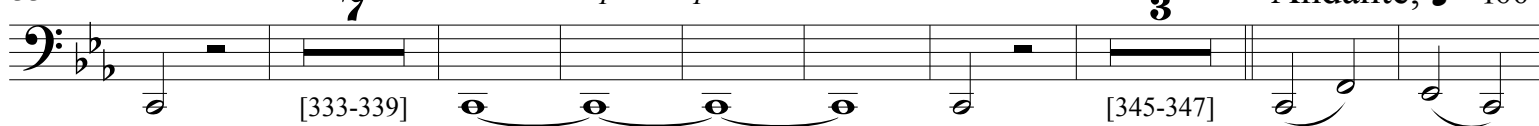
316



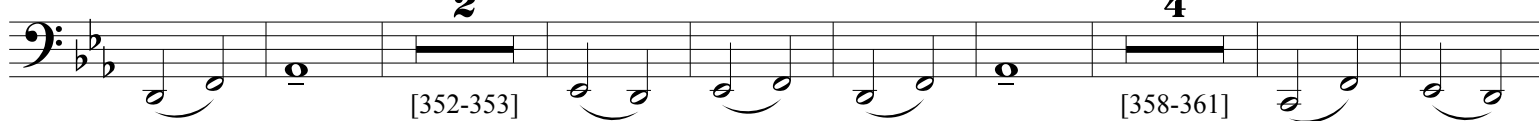
324



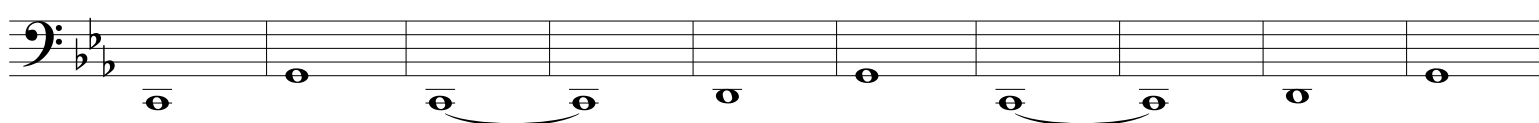
332



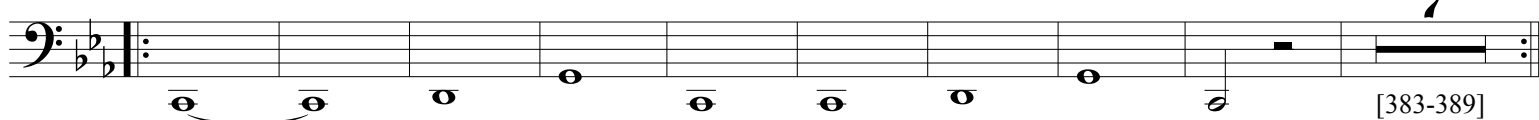
350



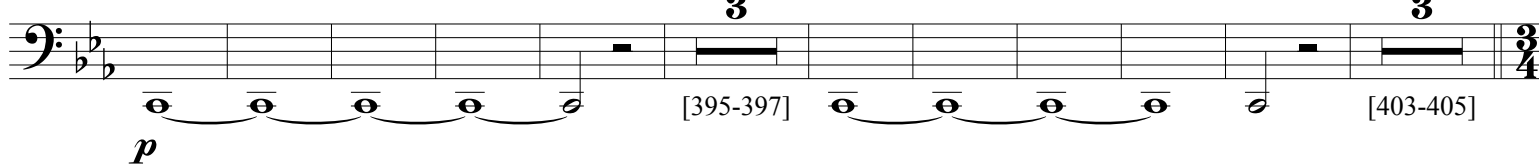
364



374



390



## 406 II: Mary, Mother of God: Andante, ♩ = 192

420 *mp*

435 *pp*

448 *pp*

460 *mp subito*

475 *pp*

488

499 *mp*

512 *pp* *mp*

527

542 *pp*

551 *poco a poco cresc.*

564 *p subito* *mp* **2**

578 [576-577]

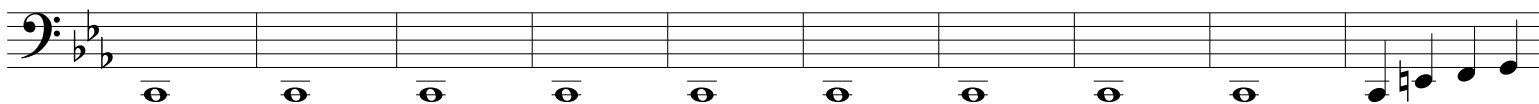




898



907



917



925



933



941



950



961



971

**Postlude**

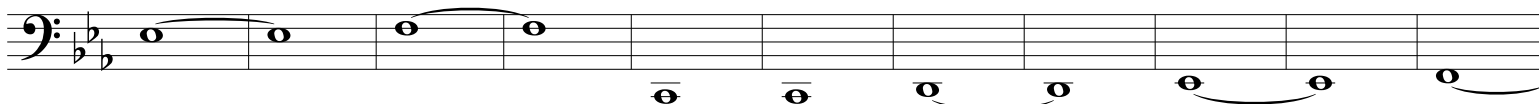
983



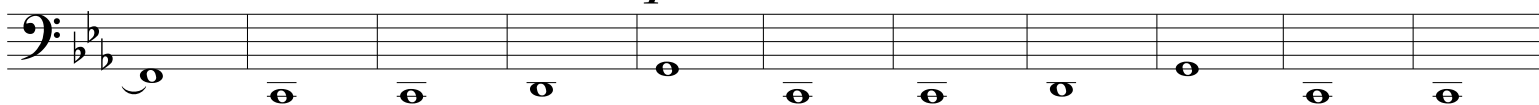
993



1003



1014



1028

