

Viola
The Kiss

for Baritone and String Quartet

Prelude: Andante, ♩ = 160

Abraham Newsom

13 *mf*

23 *mf* [19-20]

36 [23-24]

46 *p*

54

65 **I: Mary Magdalene** *mf*

73

81

89

98 *mf* [106-112]

Viola

113

a tempo

2

[117-118]

mf

123

133

f

<

>

f

143

>

mf

153

163

f

<

p

173

*f**mf**p**mf*

183

*p**mf*

193

piu mosso ♩ = 176

f

<

p

203

f

<

*mp subito**mp*

213

*mp**accel, poco a poco
becoming agitated*

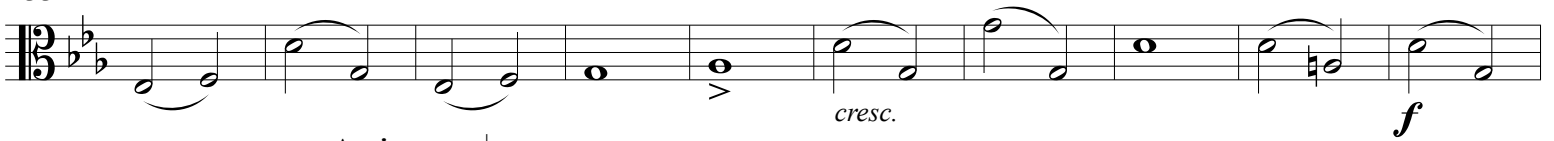
223

*p**mp**poco a poco cresc.*

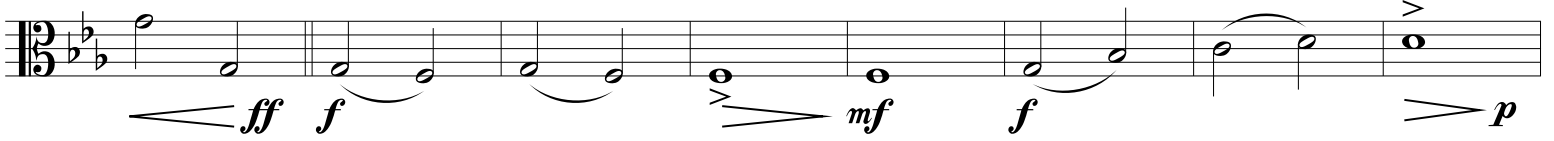
Viola Agitato, ♩ = 208 *accel.*

3

233



243 Agitato, ♩ = 160



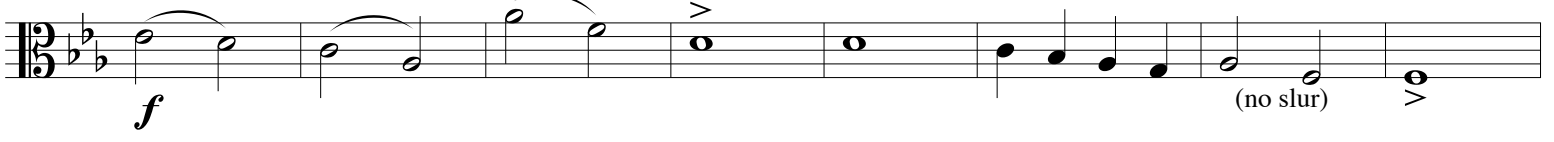
251



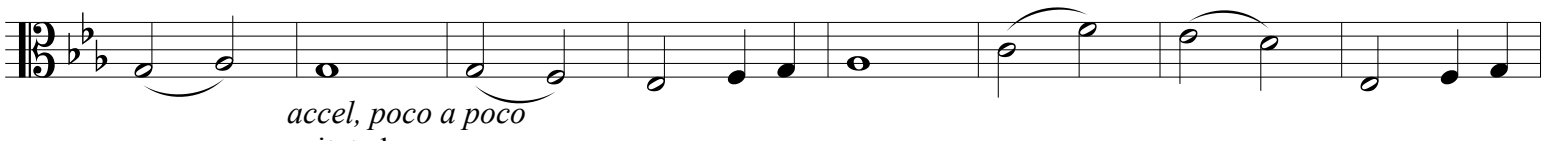
259



267



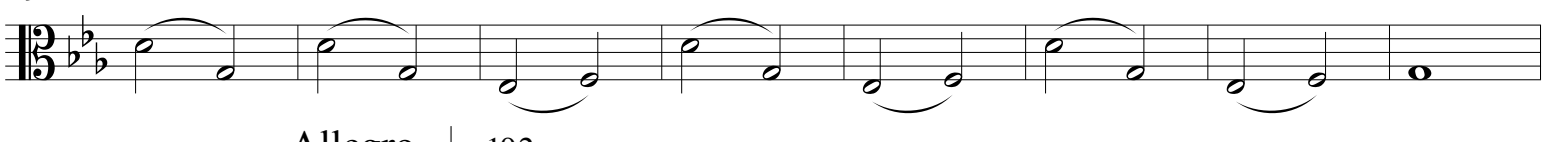
275



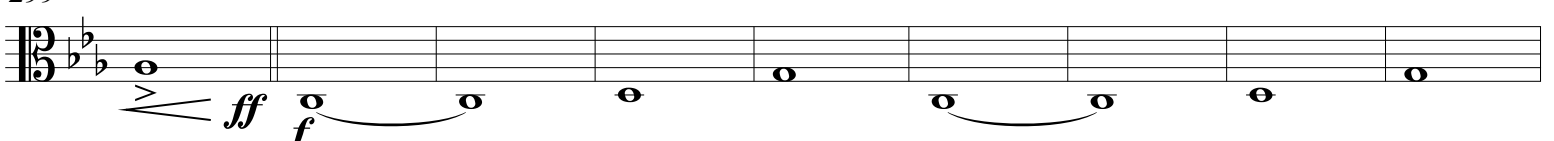
283



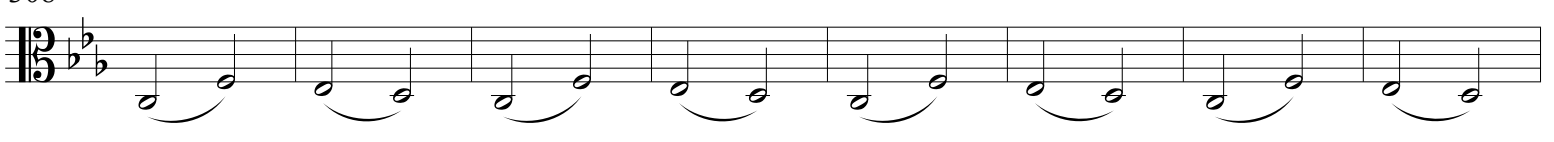
291



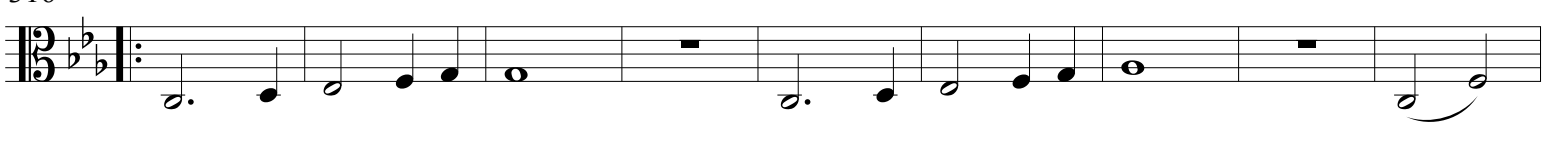
299 Allegro, ♩ = 192



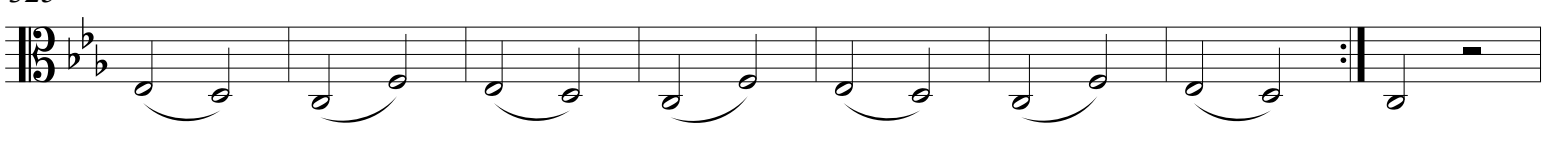
308



316



325



dim a rall poco a poco

333 **7** [333-339] **3** [345-347] *mf*

352 **2** [352-353]

362

373 *mp* *p* **7** [383-389] *rall.*

390 *mp* **3** [395-397] **3** [403-405]

p II: Mary, Mother of God: Andante, ♩ = 192

406 **2** [406-407]

416

427 *pp*

438

452 *pp* *mp subito*

463 *pp*

475

488 *mp*

499



511



523



535



547



560



572



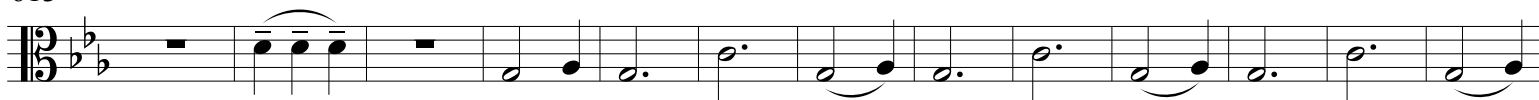
584



598



613



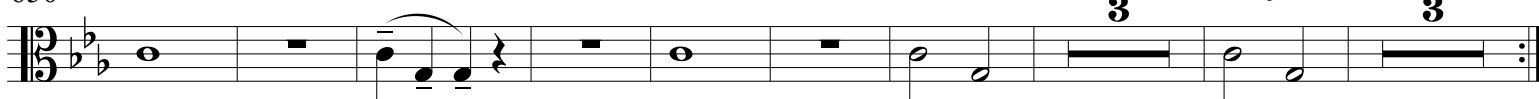
626



640 III: The Bride: A tempo, ♩ = 192



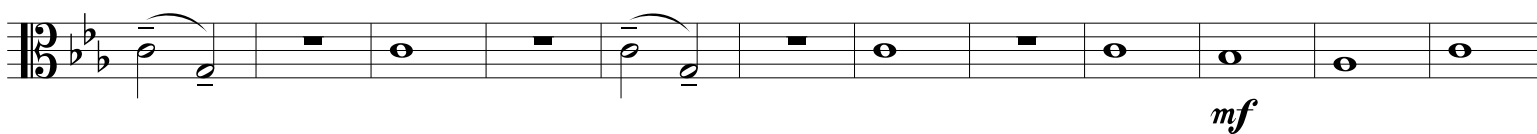
650



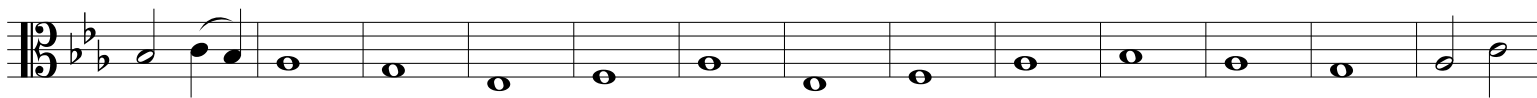
[657-659]

[661-663]

664



676



689



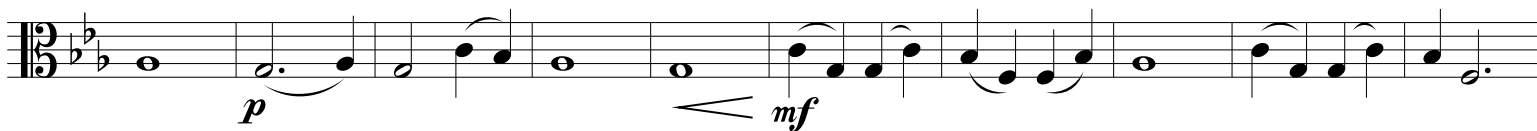
702



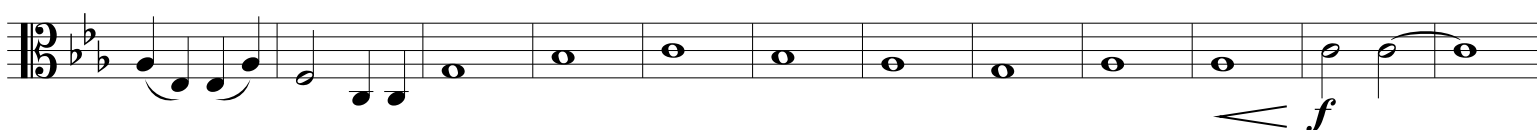
714



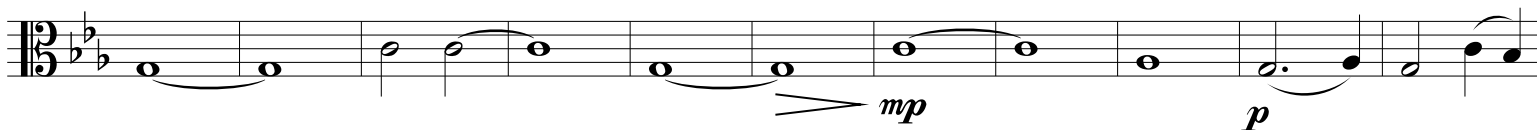
724



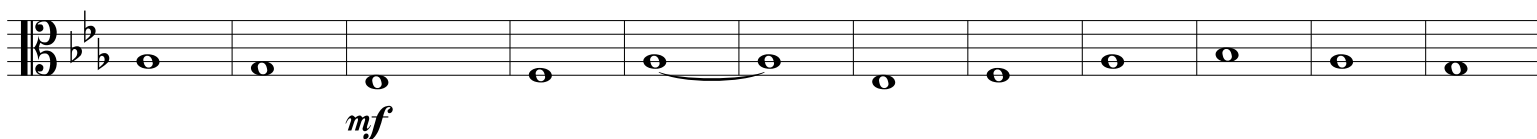
734



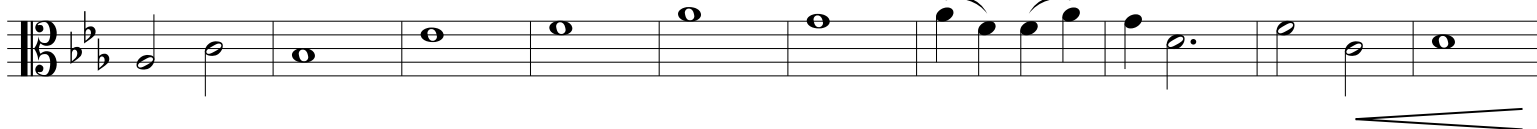
746



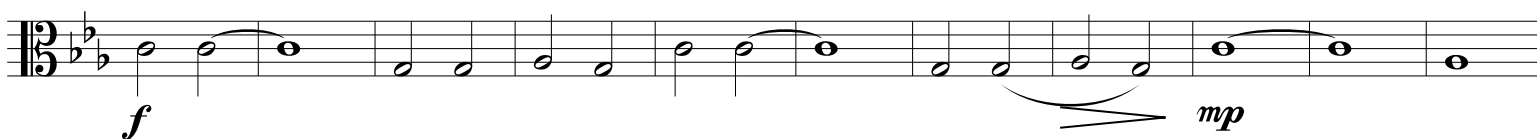
757



769



779



Viola

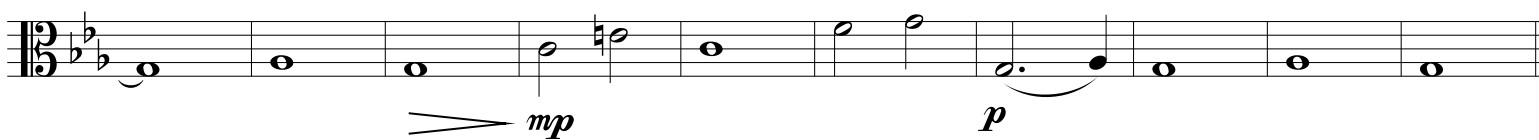
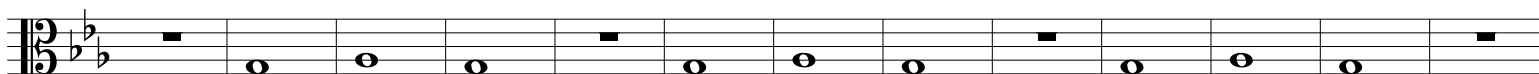
790



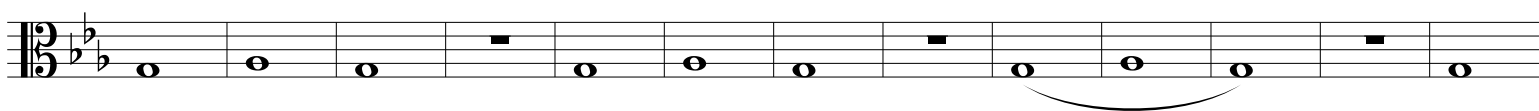
800



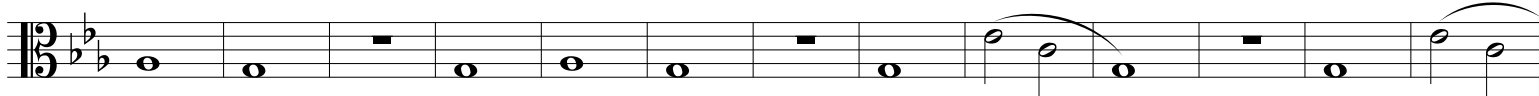
809

819 *piu mosso* ♩ = 120

832



845



858



868



875



883



892



904



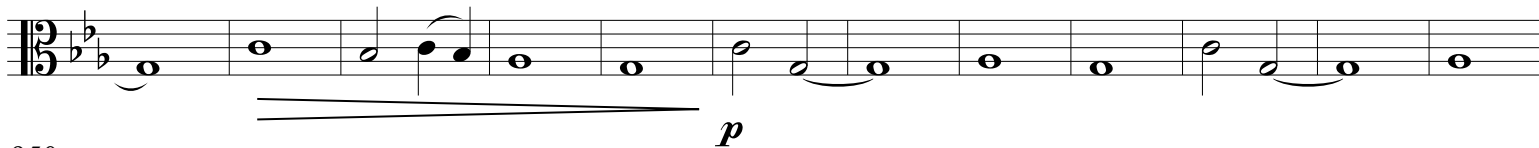
914



925



938



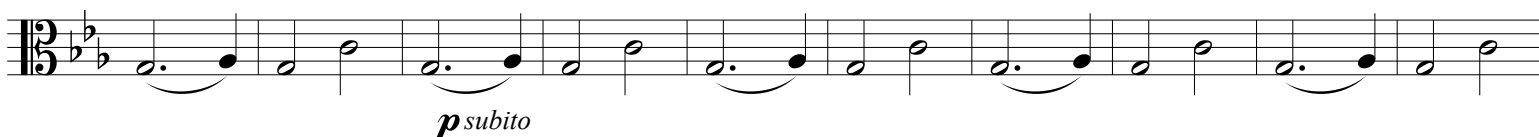
950



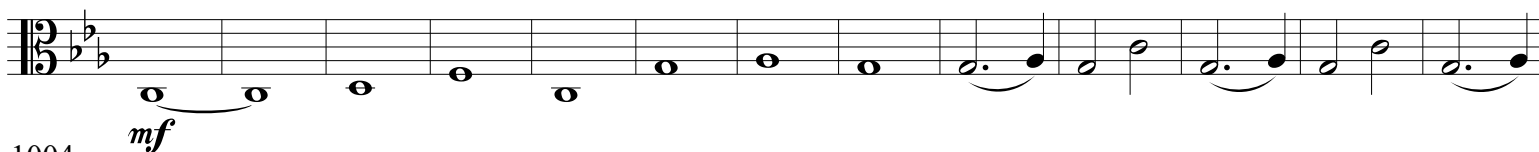
961

971 **Postlude**

981



991



1004



1014



1025

