

Violin II
The Kiss

for Baritone and String Quartet

Prelude: Andante, ♩ = 160

Abraham Newsom

7
[1-7] *mf*

13

20

28

36

47 *p* *mf*

59 **I: Mary Magdalene**
8
[65-72]

75 2 2
[75-76] [79-80]

86

98 3 3 3
[98-100] [102-104] [110-112] *rall.* *p*

Violin II

a tempo

113 *mf*

124

134 *f* *f*

144 *mf* [148-149] 2

155

165 *f* [171-172] *f* *mf*

176 [179-180] *mf* *p*

187 *mf*

196 *f* [202-203] *f*

206 *mp subito* *pp* *mp* *pp*

214 *mp*

222 *p* *mp*

piu mosso ♩ = 176

Detailed description: This is a page of a musical score for Violin II, measures 113 to 222. The music is in a key with two flats (B-flat major or D-flat minor) and 4/4 time. The score consists of ten staves. Measure numbers are placed at the beginning of each staff. Dynamics include *mf* (mezzo-forte), *f* (forte), *mp* (mezzo-piano), *pp* (pianissimo), and *p* (piano). There are several slurs, ties, and accents. Rehearsal marks [148-149], [171-172], [179-180], and [202-203] are present. A tempo change to *piu mosso* with a new tempo marking ♩ = 176 occurs at measure 206. The notation includes various note values, rests, and articulation marks.

Violin II

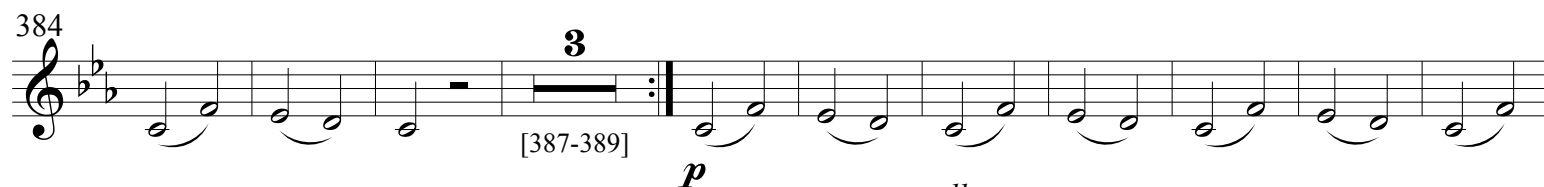
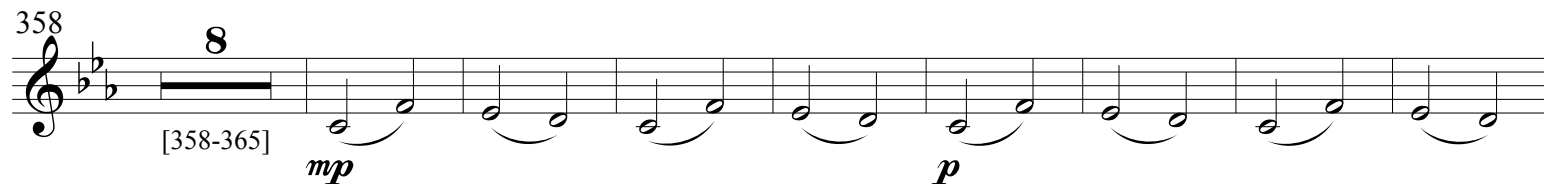
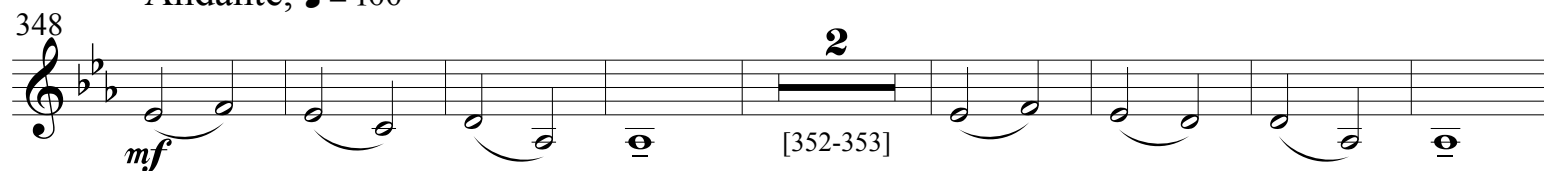
3

accel, poco a poco becoming agitated
 230 *poco a poco cresc.* *accel.*
 237 **Agitato**, $\text{♩} = 208$
 244 *cresc.* **Agitato**, $\text{♩} = 160$
 253 *f* *mf* *f* *p* *f*
 262 *p subito* *ff* *f*
 271 *p subito* *ff* *f*
 282 *accel, poco a poco agitated*
 290 *f* *(accel, poco a poco)*
 297 **Allegro**, $\text{♩} = 192$
 307 *ff* *f*
 320 *dim a rall poco a poco*
 335

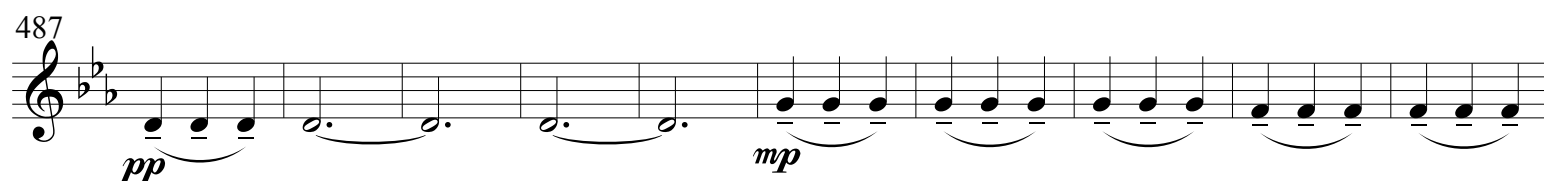
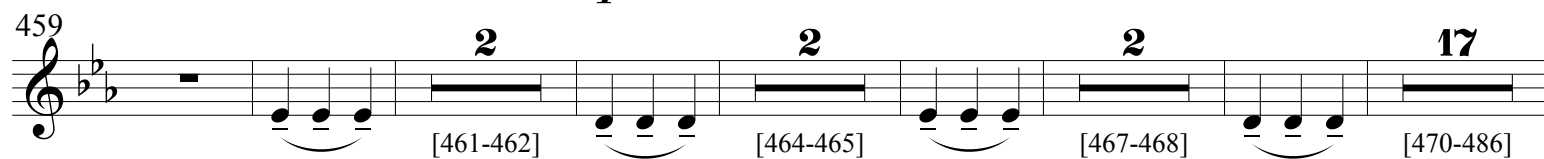
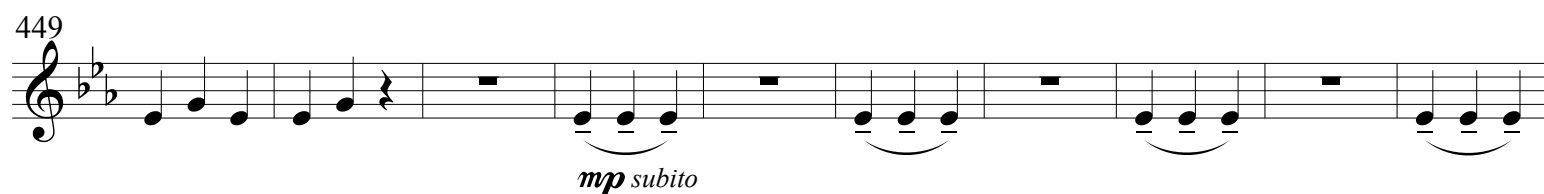
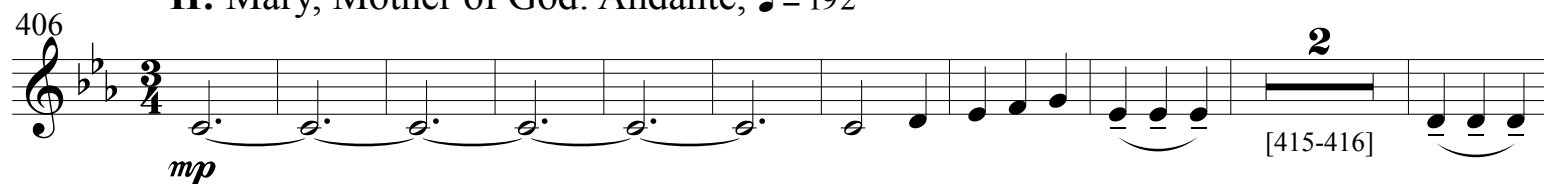
[280-281]
 [325-327]
 [329-331]
 [337-339]
 [345-347]

Andante, ♩ = 160

Violin II



II: Mary, Mother of God: Andante, ♩ = 192



Violin II

508 *mp*

518 **2** **2** **2** **14**
[519-520] [522-523] [525-526] [528-541]

542 *poco a poco cresc.*

551 **3** *p subito* [554-556] *mp*

564

576 **2** [585-586]

588 **2** **2** **14** [588-589] [591-592] [594-607] *mp*

613 **2** **2** **2** [617-618] [620-621] [623-624] *rit.*

626 **2** [626-627] *pp*

640 **III: The Bride: A tempo, ♩ = 192**

648 *mp poco a poco cresc.*

655 *mf* **2** [662-663]

Violin II

Violin II musical score, measures 664-778. The score is written in treble clef with a key signature of two flats (B-flat and E-flat). The dynamics and articulation markings are as follows:

- Measure 664: *mf*
- Measure 674: *mf*
- Measure 685: *mf*
- Measure 696: *mf*
- Measure 707: *mf subito*
- Measure 717: *p*
- Measure 727: *mf*
- Measure 737: *f*
- Measure 747: *mp* and *p*
- Measure 756: *mf*
- Measure 767: *mf*
- Measure 778: *f* and *mp*

Violin II

789

p *mf*

799

f

809

mp *p*

piu mosso $\text{♩} = 120$

819

1 2 3 4 5 6 7 8 1 2 3 4

831

5 6 7 8

841

1 2 3 4 5 6 7 8

853

863

873

1 2 3

886

p subito *mf*

899

3

[908-910]

8

Violin II

911 **4** 1 2 3 4 5 6 7

[912-915] *f* *p subito*

925 *mf*

935 1 2 3 4 *p*

947 5 6 7 8

959 *mf*

Postlude

971

980 *p subito*

989 *mf*

999 **17** [1006-1022]

1023 **3** **3** [1028-1030] [1036-1038] *p*