



8

Violin I

888 *p* *mf*

899

910 *f*

923 *p* *mf*

935

942 *p*

955 *mf*

967 **Postlude**

979 *p subito* [990-991] **2**

992 *mf*

1003 **10** [1006-1015] *p*

1025 **3** [1028-1030] **3** [1036-1038]

Violin I

The Kiss

for Baritone and String Quartet

Prelude: Andante, ♩ = 160

Abraham Newsom

7 [1-7] *mf*

13

20

27

34 **7** [34-40] *p*

50 **7** [58-64] *mf*

65 **I: Mary Magdalene**

72

82

92 **3** [98-100] *rall.* **3** [102-104]

105 *a tempo* *p*

113 *mf* **2** [117-118] **4** [123-126]

Violin I score, measures 753-878. The score is written in G major (one sharp) and 4/4 time. It features a variety of musical notations including eighth notes, quarter notes, half notes, and full notes, often beamed together. Slurs are used to group phrases. Dynamic markings include *f* (forte) and *du* (du). Fingerings are indicated by numbers 1-8. A rehearsal mark [819-826] is present. The measure numbers 753, 764, 776, 789, 798, 809, 819, 837, 849, 858, 867, and 878 are printed at the end of each staff.

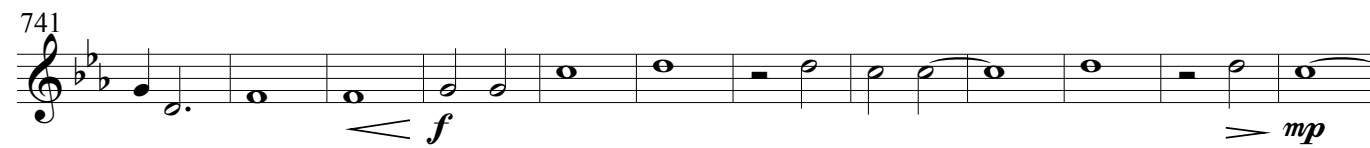
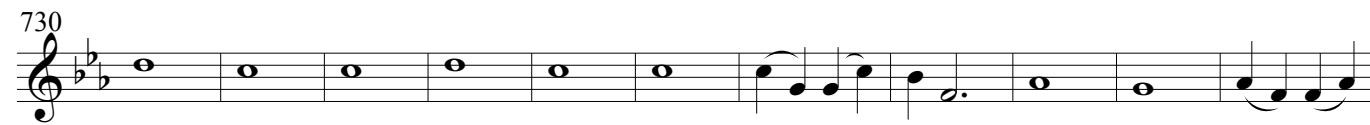
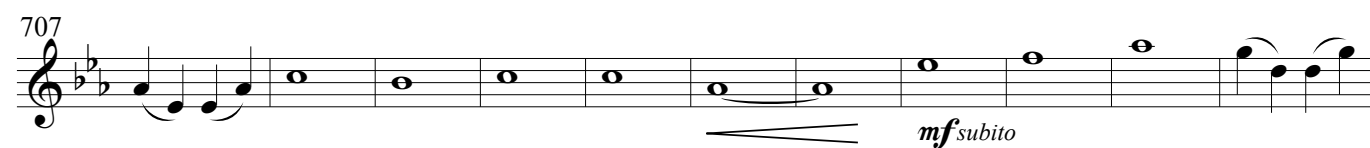
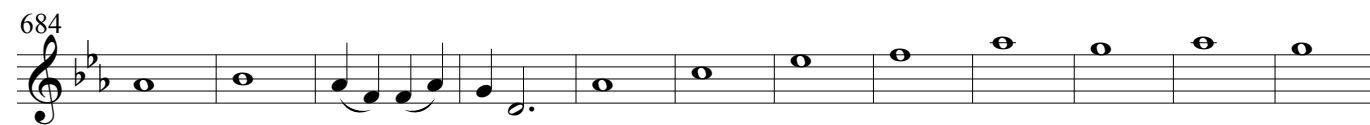
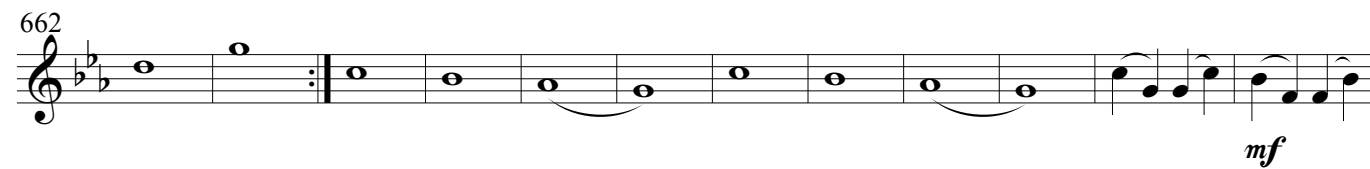
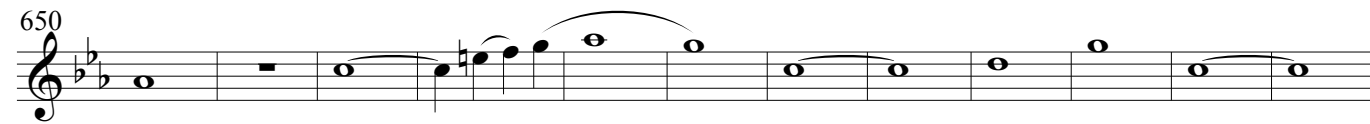
Violin I score, measures 127-222. The score is written in G major (one sharp) and 4/4 time. It features a variety of musical notations including eighth notes, quarter notes, half notes, and full notes, often beamed together. Slurs are used to group phrases. Dynamic markings include *f* (forte), *du* (du), and *du* (du). Fingerings are indicated by numbers 1-8. A rehearsal mark [154-155] is present. The measure numbers 127, 136, 144, 153, 163, 171, 180, 189, 197, 206, 214, and 222 are printed at the end of each staff.

6

Violin I

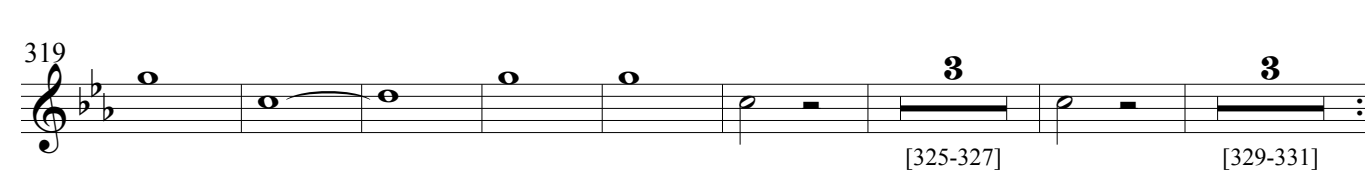
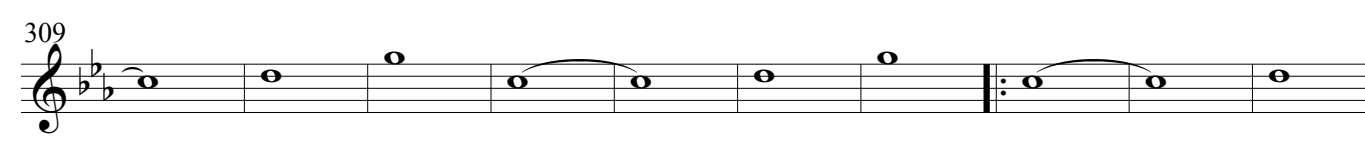
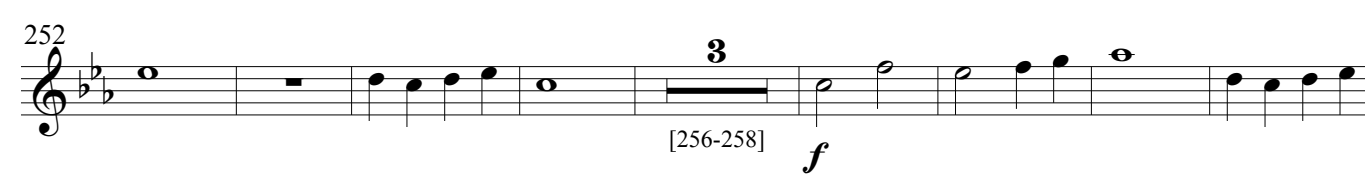
rit.

III: The Bride: A tempo, ♩ = 192



Violin I

3



4

Violin I

332

340 *dim a rall poco a poco*

348 Andante, ♩ = 160

368

378

386

393

402 *rall.*

415

441 *mp subito* *dd*

5

Violin I

454

464

492

500

512

521

542

551 *poco a poco cresc.*

565 *mp*

579

591 *mp*